

● ● ●

# PROPERTY FOR SALE: Sint - Pietersleeuw



# Location & Description

**Total size: 32.857 m<sup>2</sup>**

## Location:

- Along the channel Brussels – Charleroi (with access to the Ghijssstraat)



# Location & Description

**Total size: 32.857 m<sup>2</sup>**

- **Description:**
  - Rectangular shaped
  - Still some old construction (silos) to be destroyed



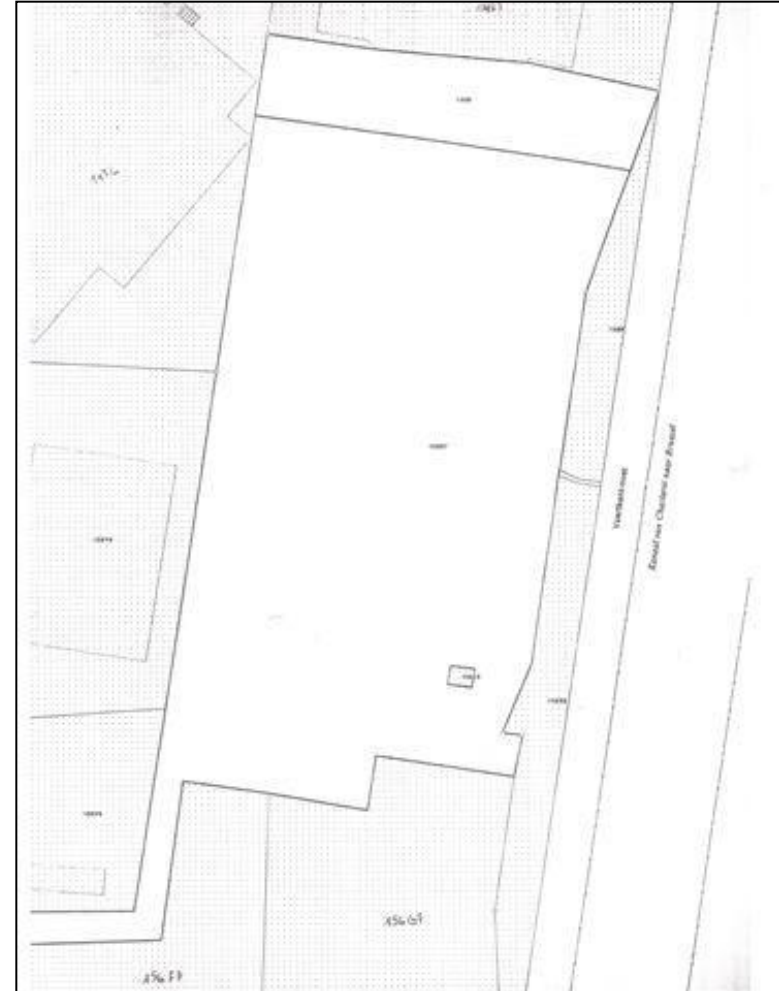
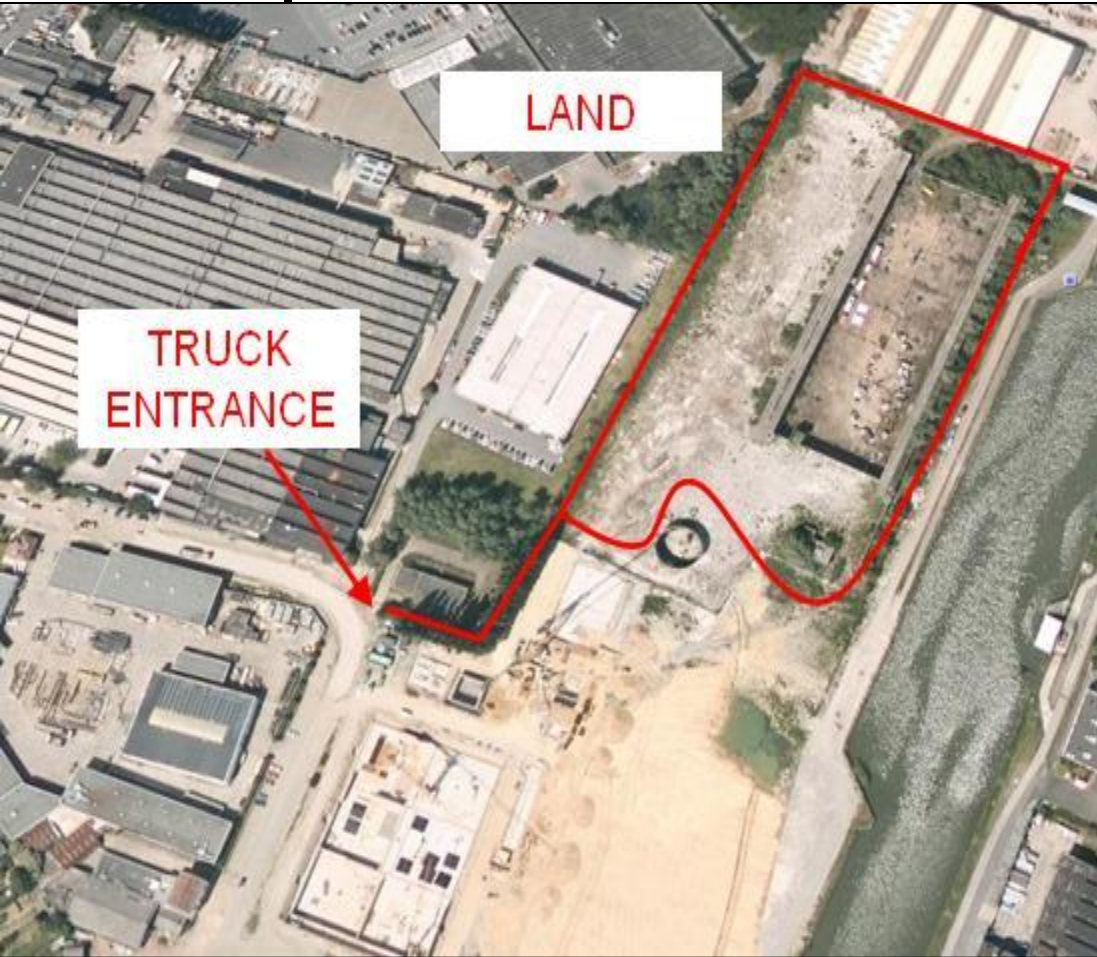
# Location & Description

**Total size: 32.857 m<sup>2</sup>**

- **Particular prescription:**
  - Business performed on the land must have a minimum of water bound activities



# Location & Description





# Contact

Roald Aerden

Gérant / Director Rare & Co SPRL

○ mobile : +32 (0) 475 416 213

○ fax : + 32(0) 071 88 88 56

○ email : [roald.aerden@intrust.be](mailto:roald.aerden@intrust.be)

<http://www.intrust.be/>

Real Estate Consultant

RPR: Namur 046014917